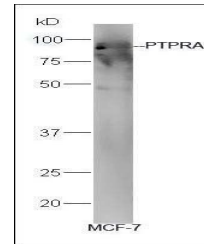


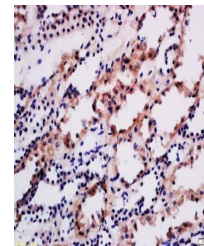
Product Datasheet

PTPRA antibody (orb6821)

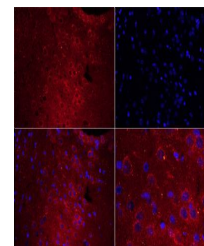
Description	PTPRA antibody
Species/Host	Rabbit
Reactivity	Rat
Conjugation	Unconjugated
Tested Applications	ELISA, IF, IHC-Fr, IHC-P
Immunogen	KLH conjugated synthetic peptide derived from human PTPRA (151-250/793 aa)
Target	PTPRA
Preservatives	0.01M TBS(pH7.4) with 1% rAlbumin, 0.03% Proclin300 and 50% Glycerol.
Form/Appearance	Liquid
Concentration	1mg/ml
Storage	Shipped at 4°C. Store at -20 °C for one year. Avoid repeated freeze/thaw cycles.
Note	For research use only
Isotype	IgG
Clonality	Polyclonal
MW	89 kDa
Uniprot ID	P18433
Expiration Date	12 months from date of receipt.



Western blot analysis of MCF-7 cell lysa...



Immunohistochemical staining of human ki...



Immunohistochemical staining of rat brai...