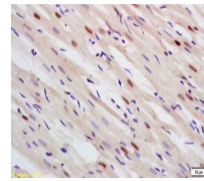

Product Datasheet

PTEN (phospho-Ser380/Thr382/Thr383) antibody (orb6818)

Description

PTEN (phospho-Ser380/Thr382/Thr383)



Immunohistochemical staining of rat hear...

Species/Host

Rabbit

Reactivity

Human, Mouse, Rat

Conjugation

Unconjugated

Tested Applications

FC, ICC, IF, IHC-P, WB

Immunogen

KLH conjugated Synthesised phosphopeptide derived from human PTEN around the phosphorylation site of Ser380/Thr382/Thr383 (RY(p-S)D(p-T)(p-T)DS)

Target

Phospho-PTEN (Ser380 + Thr382 + Thr383)

Preservatives

0.01M TBS(pH7.4) with 1% rAlbumin, 0.03% Proclin300 and 50% Glycerol.

Form/Appearance

Liquid

Concentration

1mg/ml

Storage

Shipped at 4°C. Store at -20 °C for one year. Avoid repeated freeze/thaw cycles.

Note

For research use only

Isotype

IgG

Clonality

Polyclonal

MW

44 kDa

Uniprot ID
[P60484](#)
Dilution Range

WB=1:500-2000, IHC-P=1:100-500, ICC=1:100, IF=1:100-500, Flow-Cyt=1µg /Test, IHC-F=1:100-500, ELISA=1:5000-10000

Expiration Date

12 months from date of receipt.