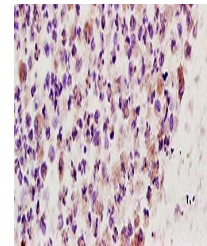


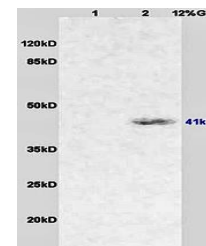
Product Datasheet

CD64 antibody (orb6816)

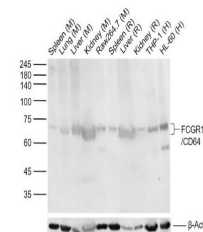
Description	CD64 antibody
Species/Host	Rabbit
Reactivity	Human, Mouse, Rat
Conjugation	Unconjugated
Tested Applications	WB
Immunogen	KLH conjugated synthetic peptide derived from human CD64/IGFR1 (101-200/374 aa)
Target	FCGR1A/CD64
Preservatives	0.01M TBS(pH7.4) with 1% rAlbumin, 0.03% Proclin300 and 50% Glycerol.
Form/Appearance	Liquid
Concentration	1mg/ml
Storage	Shipped at 4°C. Store at -20 °C for one year. Avoid repeated freeze/thaw cycles.
Note	For research use only
Isotype	IgG
Clonality	Polyclonal
Purity	affinity purified by Protein A
MW	41 kDa
Uniprot ID	P26151
Dilution Range	WB=1:500-2000 ELISA=1:5000-10000 IHC-P=1:100-500 ICC=1:100-500
Expiration Date	12 months from date of receipt.



Immunohistochemical analysis of formalin...



Western blot analysis of rat lung lysate...



WB analysis of Lane 1: Mouse Spleen tiss...