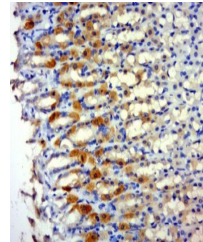


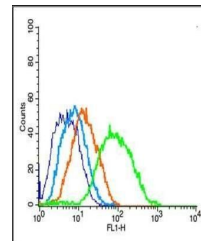
Product Datasheet

PSD95 (phospho-Tyr236/Tyr240) antibody (orb6813)

Description	PSD95 (phospho-Tyr236/Tyr240) antibody
Species/Host	Rabbit
Reactivity	Human, Mouse, Rat
Conjugation	Unconjugated
Tested Applications	FC, IHC-P
Immunogen	KLH conjugated Synthesised phosphopeptide derived from human PSD95 around the phosphorylation site of Tyr236/Tyr240 (NT(p-Y)DV)
Target	Phospho-PSD95 (Tyr236 + Tyr240)
Preservatives	0.01M TBS(pH7.4) with 1% rAlbumin, 0.03% Proclin300 and 50% Glycerol.
Form/Appearance	Liquid
Concentration	1mg/ml
Storage	Shipped at 4°C. Store at -20 °C for one year. Avoid repeated freeze/thaw cycles.
Note	For research use only
Isotype	IgG
Clonality	Polyclonal
MW	80 kDa
Uniprot ID	P78352
Dilution Range	IHC-P=1:100-500, Flow-Cyt=1µg /Test, IHC-F=1:100-500, IF=1:100-500, ELISA=1:5000-10000
Expiration Date	12 months from date of receipt.



Immunohistochemical staining of rat stom...



Flow cytometric analysis of Mouse brain ...