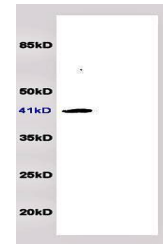


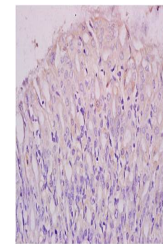
Product Datasheet

RAP2B antibody (orb6795)

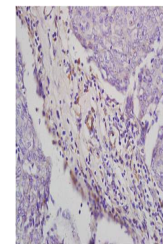
Description	RAP2B antibody
Species/Host	Rabbit
Conjugation	Unconjugated
Tested Applications	ELISA, IF, IHC-Fr, IHC-P, WB
Immunogen	KLH conjugated synthetic peptide derived from human RAP2B (51-150/183 aa)
Target	RAP2B
Preservatives	0.01M TBS(pH7.4) with 1% rAlbumin, 0.03% Proclin300 and 50% Glycerol.
Form/Appearance	Liquid
Concentration	1mg/ml
Storage	Shipped at 4°C. Store at -20 °C for one year. Avoid repeated freeze/thaw cycles.
Note	For research use only
Isotype	IgG
Clonality	Polyclonal
MW	20 kDa
Uniprot ID	P61225
Expiration Date	12 months from date of receipt.



Western blot analysis of rat brain lysat...



Paraffin-embedded human breast carcinoma...



Paraffin-embedded mouse stomach tissue f...