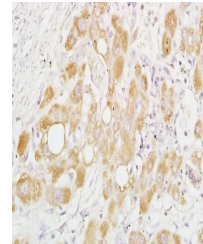


Product Datasheet

PRAS40 (phospho-Thr246) antibody (orb6793)

Description	PRAS40 (phospho-Thr246) antibody
Species/Host	Rabbit
Conjugation	Unconjugated
Tested Applications	ELISA, IF, IHC-Fr, IHC-P, WB
Immunogen	KLH conjugated Synthesised phosphopeptide derived from human PRAS40 around the phosphorylation site of Thr246 (LN(p-T)SD)
Target	Phospho-AKT1S1 (Thr246)
Preservatives	0.01M TBS(pH7.4) with 1% rAlbumin, 0.03% Proclin300 and 50% Glycerol.
Form/Appearance	Liquid
Concentration	1mg/ml
Storage	Shipped at 4°C. Store at -20 °C for one year. Avoid repeated freeze/thaw cycles.
Note	For research use only
Isotype	IgG
Clonality	Polyclonal
MW	28 kDa
Uniprot ID	Q96B36
Expiration Date	12 months from date of receipt.



Immunohistochemical analysis of formalin...