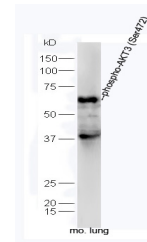


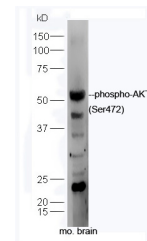
Product Datasheet

AKT3 (phospho-Ser472) antibody (orb6790)

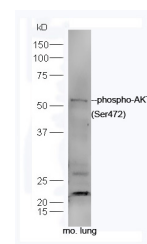
Description	AKT3 is one of 3 closely related serine/threonine-protein kinases (AKT1, AKT2 and AKT3) called the A...
Species/Host	Rabbit
Reactivity	Human, Mouse, Rat
Conjugation	Unconjugated
Tested Applications	IF, IHC-P, WB
Immunogen	KLH conjugated Synthesised phosphopeptide derived from human AKT3 around the phosphorylation site of Ser472 (QF(p-S)YS)
Target	phospho-AKT3 (Ser472)
Preservatives	0.01M TBS(pH7.4) with 1% rAlbumin, 0.03% Proclin300 and 50% Glycerol.
Form/Appearance	Liquid
Concentration	1mg/ml
Storage	Maintain refrigerated at 2-8°C for up to 2 weeks. For long term storage store at -20°C in small aliquots to prevent freeze-thaw cycles.
Note	For research use only
Isotype	IgG
Clonality	Polyclonal
Purity	Purified by Protein A
MW	56 kDa
Uniprot ID	P31749
Dilution Range	WB=1:500-2000, IHC-P=1:100-500, IF=1:100-500, IHC-F=1:100-500, ELISA=1:5000-10000
Expiration Date	12 months from date of receipt.



Western blot analysis of mouse lung lysa...



Western blot analysis of mouse brain lys...



Western blot analysis of mouse lung lysa...