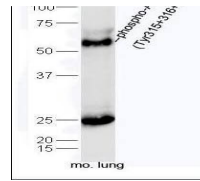

Product Datasheet

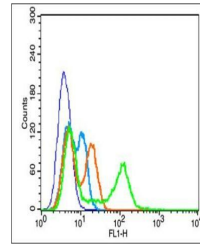
AKT1 (phospho-Tyr315/Tyr316/Tyr312) antibody (orb6789)

Description

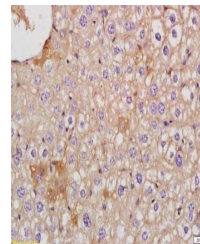
AKT1 (phospho-Tyr315/Tyr316/Tyr312)



Western blot analysis of mouse lung tiss...



Flow cytometric analysis of EC9706 Cell ...



Immunohistochemical staining of rat live...

Species/Host

Rabbit

Reactivity

Mouse, Rat

Conjugation

Unconjugated

Tested Applications

FC, IHC-P, WB

Immunogen

KLH conjugated Synthesised phosphopeptide derived from human AKT1 around the phosphorylation site of Tyr315 (PE(p-Y)LA)

Target

phospho-AKT1+AKT2+AKT3 (Tyr315+316+312)

Preservatives

0.01M TBS(pH7.4) with 1% rAlbumin, 0.03% Proclin300 and 50% Glycerol.

Form/Appearance

Liquid

Concentration

1mg/ml

Storage

Shipped at 4°C. Store at -20 °C for one year. Avoid repeated freeze/thaw cycles.

Note

For research use only

Isotype

IgG

Clonality

Polyclonal

MW

56 kDa

Uniprot ID
[P31749](https://www.uniprot.org/protein/P31749)
Dilution Range

WB=1:500-2000, IHC-P=1:100-500, Flow-Cyt=1µg/Test, IHC-F=1:100-500, IF=1:100-500, ELISA=1:5000-10000

Expiration Date

12 months from date of receipt.