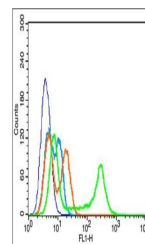


Product Datasheet

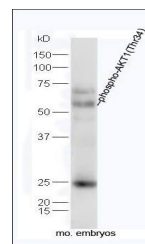
AKT1 (phospho-Thr34) antibody (orb6783)

Description	AKT1 (phospho-Thr34) antibody
Species/Host	Rabbit
Reactivity	Human, Mouse, Rat
Conjugation	Unconjugated
Tested Applications	FC, IHC-P, WB
Immunogen	KLH conjugated Synthesised phosphopeptide derived from human AKT1 around the phosphorylation site of Thr34 (DG(p-T)FI)
Target	phospho-AKT1 (Thr34)
Preservatives	0.01M TBS(pH7.4) with 1% rAlbumin, 0.03% Proclin300 and 50% Glycerol.
Form/Appearance	Liquid
Concentration	1mg/ml
Storage	Shipped at 4°C. Store at -20 °C for one year. Avoid repeated freeze/thaw cycles.
Note	For research use only
Isotype	IgG
Clonality	Polyclonal
MW	56 kDa
Uniprot ID	P31749
Dilution Range	WB=1:500-2000, IHC-P=1:100-500, Flow-Cyt=2µg/Test, IHC-F=1:100-500, IF=1:100-500, ELISA=1:5000-10000
Expiration Date	12 months from date of receipt.

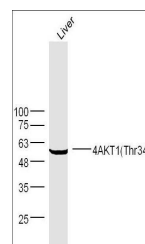


Flow cytometric analysis of EC9706 Cell

...



Western blot analysis of mouse embryos I...



Western blot analysis of extracts from L...