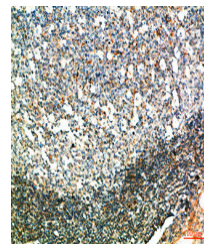


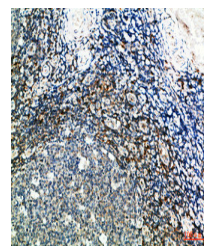
Product Datasheet

GSC antibody (orb676430)

Description	GSC antibody
Species/Host	Rabbit
Reactivity	Human, Mouse, Rat
Conjugation	Unconjugated
Tested Applications	ELISA, IHC
Immunogen	Synthetic peptide from Human protein at AA range: 207-256
Target	GSC
Preservatives	PBS, pH 7.4, containing 0.02% sodium azide as Preservative and 50% Glycerol.
Form/Appearance	Liquid
Storage	Maintain refrigerated at 2-8°C for up to 2 weeks. For long term storage store at -20°C in small aliquots to prevent freeze-thaw cycles.
Note	For research use only
Isotype	IgG
Clonality	Polyclonal
Uniprot ID	P56915
Dilution Range	IHC-P: 1: 50-300, ELISA: 1: 10000-20000
Expiration Date	12 months from date of receipt.



Immunohistochemical staining of human-to...



Immunohistochemical staining of human-to...