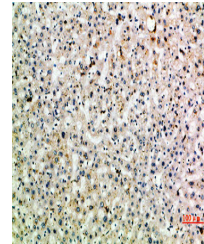


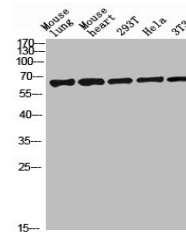
## Product Datasheet

### CLEC4M antibody (orb676408)

<b>Description</b>	CLEC4M antibody
<b>Species/Host</b>	Rabbit
<b>Reactivity</b>	Human, Mouse, Rat
<b>Conjugation</b>	Unconjugated
<b>Tested Applications</b>	ELISA, IHC, WB
<b>Immunogen</b>	Synthetic peptide from Human protein at AA range: 271-320
<b>Target</b>	CLEC4M
<b>Preservatives</b>	PBS, pH 7.4, containing 0.02% sodium azide as Preservative and 50% Glycerol.
<b>Form/Appearance</b>	Liquid
<b>Storage</b>	Upon receipt, store at -20°C or -80°C. Avoid repeated freeze.
<b>Note</b>	For research use only
<b>Isotype</b>	IgG
<b>Clonality</b>	Polyclonal
<b>Uniprot ID</b>	<b>Q9H2X3</b>
<b>Dilution Range</b>	WB: 1:500-1:2000, IHC-P: 1:100-1:300, ELISA: 1:20000
<b>Expiration Date</b>	12 months from date of receipt.



Immunohistochemical staining of human-li...



Western blot analysis of mouse-lung mous...