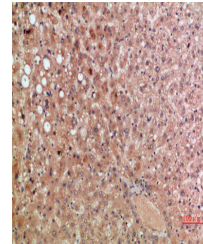


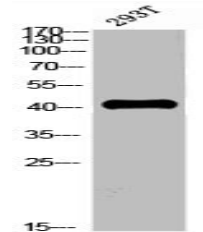
Product Datasheet

CCR5 antibody (orb676371)

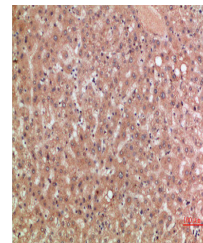
Description	CCR5 antibody
Species/Host	Rabbit
Reactivity	Human
Conjugation	Unconjugated
Tested Applications	ELISA, IHC, WB
Immunogen	Synthetic peptide from Human protein at AA range: 151-200
Target	CCR5
Preservatives	PBS, pH 7.4, containing 0.02% sodium azide as Preservative and 50% Glycerol.
Form/Appearance	Liquid
Storage	Upon receipt, store at -20°C or -80°C. Avoid repeated freeze.
Note	For research use only
Isotype	IgG
Clonality	Polyclonal
Uniprot ID	P51681
Dilution Range	WB: 1: 500-2000, IHC-P: 1: 50-300, ELISA: 1: 10000-20000
Expiration Date	12 months from date of receipt.



Immunohistochemical staining of human-li...



Western blot analysis of HeLa lysate usi...



Immunohistochemical staining of human-li...