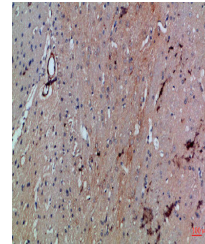


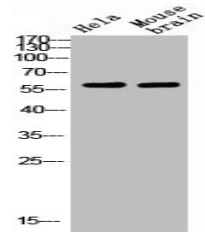
Product Datasheet

SLC6A1 antibody (orb676348)

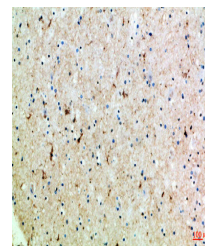
Description	SLC6A1 antibody
Species/Host	Rabbit
Reactivity	Human, Mouse, Rat
Conjugation	Unconjugated
Tested Applications	ELISA, WB
Immunogen	Synthetic peptide from Human protein at AA range: Internal
Target	SLC6A1
Preservatives	PBS, pH 7.4, containing 0.02% sodium azide as Preservative and 50% Glycerol.
Form/Appearance	Liquid
Storage	Maintain refrigerated at 2-8°C for up to 2 weeks. For long term storage store at -20°C in small aliquots to prevent freeze-thaw cycles.
Note	For research use only
Isotype	IgG
Clonality	Polyclonal
Uniprot ID	P30531
Dilution Range	WB: 1: 500-2000, ELISA: 1: 10000-20000
Expiration Date	12 months from date of receipt.



Immunohistochemical staining of Rat-brain...



Western blot analysis of HELA MOUSE-BRAI...



Immunohistochemical staining of Human-br...