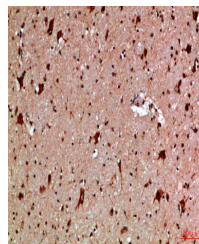


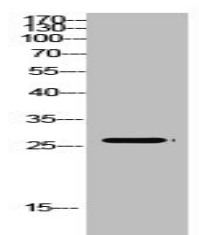
Product Datasheet

MBL2 antibody (orb676324)

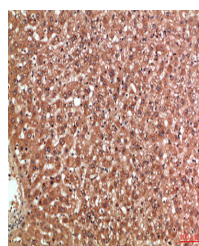
Description	MBL2 antibody
Species/Host	Rabbit
Reactivity	Human, Mouse
Conjugation	Unconjugated
Tested Applications	ELISA, WB
Immunogen	Synthetic peptide from Human protein at AA range: 21-70
Target	MBL2
Preservatives	PBS, pH 7.4, containing 0.02% sodium azide as Preservative and 50% Glycerol.
Form/Appearance	Liquid
Storage	Maintain refrigerated at 2-8°C for up to 2 weeks. For long term storage store at -20°C in small aliquots to prevent freeze-thaw cycles.
Note	For research use only
Isotype	IgG
Clonality	Polyclonal
Uniprot ID	P11226
Dilution Range	WB: 1: 500-10000, ELISA: 1: 10000
Expiration Date	12 months from date of receipt.



Immunohistochemical staining of human-br...



Western blot analysis of mouse-kidney ce...



Immunohistochemical staining of human-li...