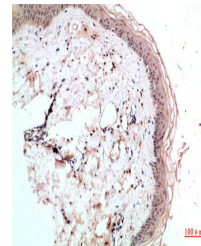


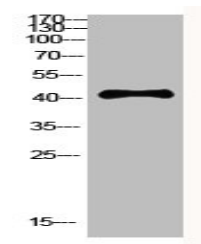
Product Datasheet

RCC1 antibody (orb676320)

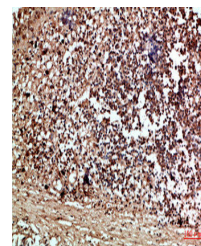
Description	RCC1 antibody
Species/Host	Rabbit
Reactivity	Human, Mouse, Rat
Conjugation	Unconjugated
Tested Applications	ELISA, WB
Immunogen	Synthetic peptide from Human protein at AA range: 301-350
Target	RCC1
Preservatives	PBS, pH 7.4, containing 0.02% sodium azide as Preservative and 50% Glycerol.
Form/Appearance	Liquid
Storage	Maintain refrigerated at 2-8°C for up to 2 weeks. For long term storage store at -20°C in small aliquots to prevent freeze-thaw cycles.
Note	For research use only
Isotype	IgG
Clonality	Polyclonal
Uniprot ID	P18754
Dilution Range	WB: 1: 500-10000, ELISA: 1: 10000
Expiration Date	12 months from date of receipt.



Immunohistochemical staining of human-skin...



Western blot analysis of HEPG2 cells using...



Immunohistochemical staining of human-tissue...