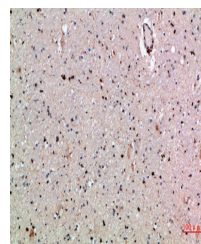


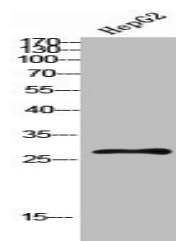
## Product Datasheet

### CLEC4A antibody (orb676315)

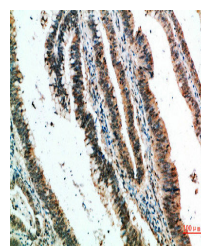
<b>Description</b>	CLEC4A antibody
<b>Species/Host</b>	Rabbit
<b>Reactivity</b>	Human
<b>Conjugation</b>	Unconjugated
<b>Tested Applications</b>	ELISA, WB
<b>Immunogen</b>	Synthesized peptide derived from CLECSF6 at AA range: 161-210
<b>Target</b>	CLEC4A
<b>Preservatives</b>	Liquid in PBS containing 50% glycerol, 0.5% rAlbumin and 0.02% sodium azide.
<b>Form/Appearance</b>	Liquid
<b>Storage</b>	Maintain refrigerated at 2-8°C for up to 2 weeks. For long term storage store at -20°C in small aliquots to prevent freeze-thaw cycles.
<b>Note</b>	For research use only
<b>Isotype</b>	IgG
<b>Clonality</b>	Polyclonal
<b>Uniprot ID</b>	<b>Q9UMR7</b>
<b>Dilution Range</b>	WB: 1: 500-2000, ELISA: 1: 10000-20000
<b>Expiration Date</b>	12 months from date of receipt.



Immunohistochemical staining of human-br...



Western blot analysis of HEPG2 cells usi...



Immunohistochemical staining of human-co...