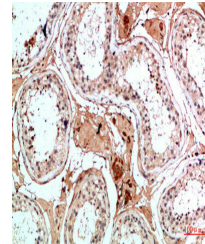


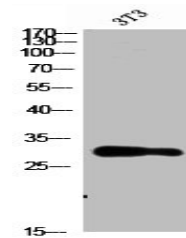
Product Datasheet

NANOS1 antibody (orb676312)

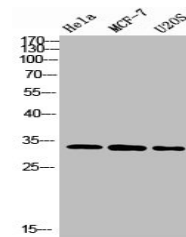
Description	NANOS1 antibody
Species/Host	Rabbit
Reactivity	Human
Conjugation	Unconjugated
Tested Applications	ELISA, WB
Immunogen	Synthesized peptide derived from Nanos Homologue 1 (NANOS1) at AA range: 151-200
Target	NANOS1
Preservatives	Liquid in PBS containing 50% glycerol, 0.5% rAlbumin and 0.02% sodium azide.
Form/Appearance	Liquid
Storage	Maintain refrigerated at 2-8°C for up to 2 weeks. For long term storage store at -20°C in small aliquots to prevent freeze-thaw cycles.
Note	For research use only
Isotype	IgG
Clonality	Polyclonal
Uniprot ID	Q8WY41
Dilution Range	WB: 1: 500-2000, ELISA: 1: 10000-20000
Expiration Date	12 months from date of receipt.



Immunohistochemical staining of human-te...



Western blot analysis of 3T3 cells using...



Western blot analysis of various cells u...