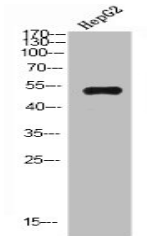


Product Datasheet

IGHM antibody (orb676301)

Description	IGHM antibody
Species/Host	Rabbit
Reactivity	Human, Mouse, Rat
Conjugation	Unconjugated
Tested Applications	ELISA, WB
Immunogen	Synthesized peptide derived from IgM Chain C at AA range: 391-440
Target	IGHM
Preservatives	Liquid in PBS containing 50% glycerol, 0.5% rAlbumin and 0.02% sodium azide.
Form/Appearance	Liquid
Storage	Upon receipt, store at -20°C or -80°C. Avoid repeated freeze.
Note	For research use only
Isotype	IgG
Clonality	Polyclonal
Uniprot ID	P01871
Dilution Range	WB: 1: 500-2000, ELISA: 1: 10000-20000
Expiration Date	12 months from date of receipt.



Western blot analysis of HEPG2 cells using...