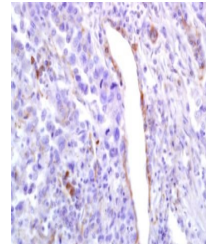


Product Datasheet

PLK1 (phospho-Ser137) antibody (orb6763)

| | |
|----------------------------|--|
| Description | PLK1 (phospho-Ser137) antibody |
| Species/Host | Rabbit |
| Reactivity | Human, Mouse, Rat |
| Conjugation | Unconjugated |
| Tested Applications | IHC-P, WB |
| Immunogen | KLH conjugated Synthesised phosphopeptide derived from human PLK1 around the phosphorylation site of Ser137 (R(p-S)LL) |
| Target | Phospho-PLK1 (Ser137) |
| Preservatives | 0.01M TBS(pH7.4) with 1% rAlbumin, 0.03% Proclin300 and 50% Glycerol. |
| Form/Appearance | Liquid |
| Concentration | 1mg/ml |
| Storage | Shipped at 4°C. Store at -20 °C for one year. Avoid repeated freeze/thaw cycles. |
| Note | For research use only |
| Isotype | IgG |
| Clonality | Polyclonal |
| MW | 68 kDa |
| CAS Number | Serine/threonine-protein kinase PLK1 |
| Uniprot ID | P53350 |
| Dilution Range | WB=1:500-1000, IHC-P=1:100-500 |
| Expiration Date | 12 months from date of receipt. |



Immunohistochemical analysis of formalin...