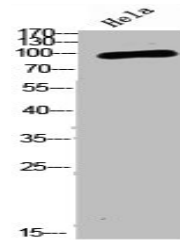


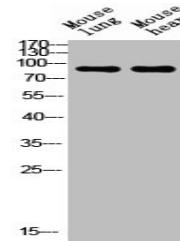
## Product Datasheet

### NCAM1 antibody (orb676278)

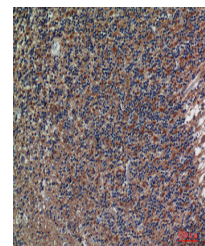
<b>Description</b>	NCAM1 antibody
<b>Species/Host</b>	Rabbit
<b>Reactivity</b>	Human
<b>Conjugation</b>	Unconjugated
<b>Tested Applications</b>	ELISA, IHC, WB
<b>Immunogen</b>	Synthesized peptide derived from the Internal region of Human CD56.
<b>Target</b>	NCAM1
<b>Preservatives</b>	Liquid in PBS containing 50% glycerol, 0.5% rAlbumin and 0.02% sodium azide.
<b>Form/Appearance</b>	Liquid
<b>Storage</b>	Upon receipt, store at -20°C or -80°C. Avoid repeated freeze.
<b>Note</b>	For research use only
<b>Isotype</b>	IgG
<b>Clonality</b>	Polyclonal
<b>Uniprot ID</b>	<b>P13591</b>
<b>Dilution Range</b>	WB: 1:500-1:2000, IHC-P: 1: 100-1: 300, ELISA: 1:10000
<b>Expiration Date</b>	12 months from date of receipt.



Western blot analysis of HeLa cells using NCAM1 antibody (orb676278).



Western blot analysis of mouse-lung and mouse-heart using NCAM1 antibody (orb676278).



Immunohistochemical staining of human-brain tissue using NCAM1 antibody (orb676278).