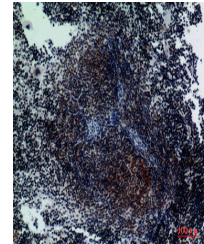


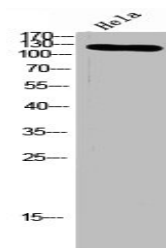
Product Datasheet

ITGA3 antibody (orb676260)

Description	ITGA3 antibody
Species/Host	Rabbit
Reactivity	Human, Mouse, Rat
Conjugation	Unconjugated
Tested Applications	ELISA, IHC, WB
Immunogen	Synthesized peptide derived from the Internal region of Human Integrin α 3.
Target	ITGA3
Preservatives	Liquid in PBS containing 50% glycerol, 0.5% rAlbumin and 0.02% sodium azide.
Form/Appearance	Liquid
Storage	Upon receipt, store at -20°C or -80°C. Avoid repeated freeze.
Note	For research use only
Isotype	IgG
Clonality	Polyclonal
Uniprot ID	P26006
Dilution Range	WB: 1:500-1:2000, IHC-P: 1: 100-1: 300, ELISA: 1:10000
Expiration Date	12 months from date of receipt.



Immunohistochemical staining of mouse-sp...



Western blot analysis of hela lysis usin...