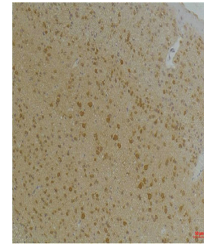


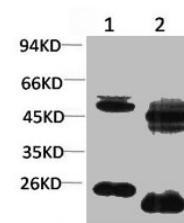
Product Datasheet

KCNA10 antibody (orb676230)

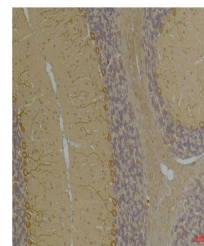
Description	KCNA10 antibody
Species/Host	Rabbit
Reactivity	Human, Mouse, Rat
Conjugation	Unconjugated
Tested Applications	ELISA, IHC, WB
Immunogen	Synthetic Peptide
Target	KCNA10
Preservatives	Liquid in PBS containing 50% glycerol, 0.5% rAlbumin and 0.02% sodium azide.
Form/Appearance	Liquid
Storage	Maintain refrigerated at 2-8°C for up to 2 weeks. For long term storage store at -20°C in small aliquots to prevent freeze-thaw cycles.
Note	For research use only
Isotype	IgG
Clonality	Polyclonal
Uniprot ID	Q16322
Dilution Range	WB: 1: 1000-2000, IHC-P: 1: 100-200
Expiration Date	12 months from date of receipt.



Immunohistochemical staining of Mouse Br...



Western blot analysis of 1) Rat Brain Ti...



Immunohistochemical staining of Rat Brai...