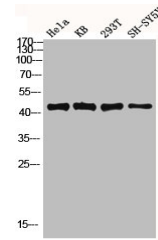


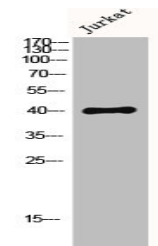
Product Datasheet

DUSP1 antibody (orb676188)

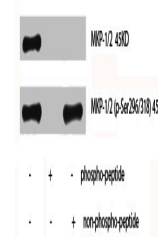
Description	DUSP1 antibody
Species/Host	Rabbit
Reactivity	Human, Mouse, Rat
Conjugation	Unconjugated
Tested Applications	ELISA, IHC, WB
Immunogen	Synthesized peptide derived from Human MKP-1/2 around the non-phosphorylation site of S296/318.
Target	DUSP1/DUSP4
Preservatives	Liquid in PBS containing 50% glycerol, 0.5% rAlbumin and 0.02% sodium azide.
Form/Appearance	Liquid
Storage	Maintain refrigerated at 2-8°C for up to 2 weeks. For long term storage store at -20°C in small aliquots to prevent freeze-thaw cycles.
Note	For research use only
Isotype	IgG
Clonality	Polyclonal
Uniprot ID	Q13115 , P28562
Dilution Range	WB: 1:500-1:2000, IHC-P: 1:100-1:300, ELISA: 1:20000
Expiration Date	12 months from date of receipt.



Western blot analysis of Hela KB 293T SH...



Western blot analysis of Jurkat cells us...



Western blot analysis of Hela cells usin...