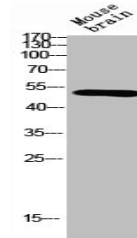


Product Datasheet

SGK1 antibody (orb676159)

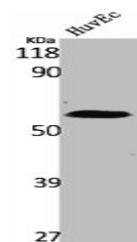
Description	SGK1 antibody
Species/Host	Rabbit
Reactivity	Human, Mouse, Rat
Conjugation	Unconjugated
Tested Applications	ELISA, IF, IHC, WB
Immunogen	Synthesized peptide derived from Human SGK1 around the non-phosphorylation site of S78.
Target	SGK1
Preservatives	Liquid in PBS containing 50% glycerol, 0.5% rAlbumin and 0.02% sodium azide.
Form/Appearance	Liquid
Storage	Upon receipt, store at -20°C or -80°C. Avoid repeated freeze.
Note	For research use only
Isotype	IgG
Clonality	Polyclonal
Uniprot ID	O00141
Dilution Range	WB: 1:500-1:2000, IHC-P: 1:100-1:300, IF: 1:200-1:1000, ELISA: 1:5000
Expiration Date	12 months from date of receipt.



Western blot analysis of RAW using SGK1 ...



Western blot analysis of 293 cells using...



Western blot analysis of HuvEc cells usi...