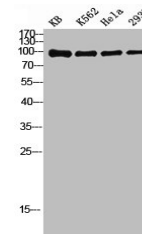


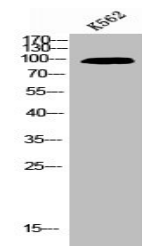
Product Datasheet

NFKB2 antibody (orb676149)

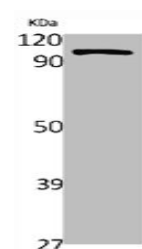
Description	NFKB2 antibody
Species/Host	Rabbit
Reactivity	Human, Mouse, Rat
Conjugation	Unconjugated
Tested Applications	ELISA, IF, IHC, IP, WB
Immunogen	Synthesized peptide derived from Human NFκB-p100 around the non-phosphorylation site of S865.
Target	NFKB2
Preservatives	Liquid in PBS containing 50% glycerol, 0.5% rAlbumin and 0.02% sodium azide.
Form/Appearance	Liquid
Storage	Maintain refrigerated at 2-8°C for up to 2 weeks. For long term storage store at -20°C in small aliquots to prevent freeze-thaw cycles.
Note	For research use only
Isotype	IgG
Clonality	Polyclonal
Uniprot ID	Q00653
Dilution Range	WB: 1:500-1:2000, IHC-P: 1:100-1:300, IP: 2-5ug:mglysate, IF: 1:200-1:1000, ELISA: 1:20000
Expiration Date	12 months from date of receipt.



Western blot analysis of KB K562 HeLa 293T



Western blot analysis of K562 cells using...



Western blot analysis of various cells using...