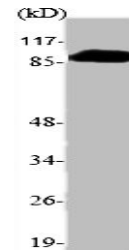


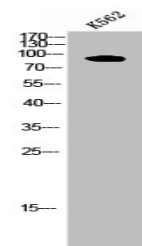
Product Datasheet

PDE4B antibody (orb676117)

Description	PDE4B antibody
Species/Host	Rabbit
Reactivity	Human, Mouse, Rat
Conjugation	Unconjugated
Tested Applications	ELISA, IHC, WB
Immunogen	Synthesized peptide derived from Human PDE4B/C/D around the non-phosphorylation site of S133/119/190.
Target	PDE4B/PDE4C/PDE4D
Preservatives	Liquid in PBS containing 50% glycerol, 0.5% rAlbumin and 0.02% sodium azide.
Form/Appearance	Liquid
Storage	Maintain refrigerated at 2-8°C for up to 2 weeks. For long term storage store at -20°C in small aliquots to prevent freeze-thaw cycles.
Note	For research use only
Isotype	IgG
Clonality	Polyclonal
Uniprot ID	Q08499 , Q07343 , Q08493
Dilution Range	WB: 1:500-1:2000, IHC-P: 1:100-1:300, ELISA: 1:10000
Expiration Date	12 months from date of receipt.



Western blot analysis of various cells u...



Western blot analysis of K562 cells usin...