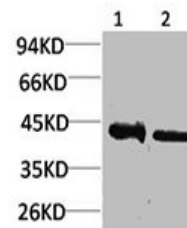


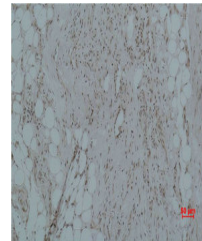
Product Datasheet

CALHM1 antibody (orb676071)

Description	CALHM1 antibody
Species/Host	Rabbit
Reactivity	Human, Rat
Conjugation	Unconjugated
Tested Applications	IHC, WB
Immunogen	Synthetic Peptide
Target	CALHM1
Preservatives	PBS, pH 7.4, containing 0.02% sodium azide as Preservative and 50% Glycerol.
Form/Appearance	Liquid
Storage	Maintain refrigerated at 2-8°C for up to 2 weeks. For long term storage store at -20°C in small aliquots to prevent freeze-thaw cycles.
Note	For research use only
Isotype	IgG
Clonality	Polyclonal
Uniprot ID	Q8IU99
Dilution Range	WB: 1: 500-1000, IHC-P: 1: 200-500
Expiration Date	12 months from date of receipt.



Western blot analysis of 1) Human Brain ...



Immunohistochemical staining of Human He...