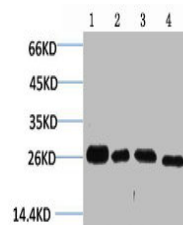


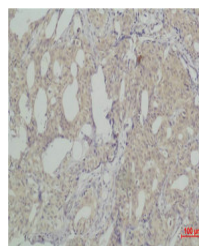
## Product Datasheet

### SNAI2 antibody (orb676060)

|                            |  |
|----------------------------|--|
| <b>Description</b>         | SNAI2 antibody   |
| <b>Species/Host</b>        | Rabbit   |
| <b>Reactivity</b>          | Human, Mouse, Rat  |
| <b>Conjugation</b>         | Unconjugated   |
| <b>Tested Applications</b> | IHC, WB  |
| <b>Immunogen</b>           | Recombinant Protein  |
| <b>Target</b>              | SNAI2  |
| <b>Preservatives</b>       | PBS, pH 7.4, containing 0.02% sodium azide as Preservative and 50% Glycerol. |
| <b>Form/Appearance</b>     | Liquid   |
| <b>Storage</b>             | Upon receipt, store at -20°C or -80°C. Avoid repeated freeze.                |
| <b>Note</b>                | For research use only  |
| <b>Isotype</b>             | IgG  |
| <b>Clonality</b>           | Polyclonal   |
| <b>Uniprot ID</b>          | <b>043623</b>  |
| <b>Dilution Range</b>      | WB: 1: 500-1000, IHC-P: 1: 200-500   |
| <b>Expiration Date</b>     | 12 months from date of receipt.  |



Western blot analysis of 1) MCF7, 2) Mou...



Immunohistochemical staining of Human Br...