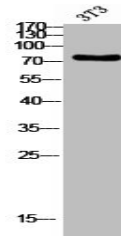


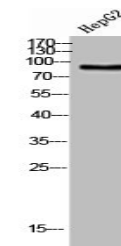
Product Datasheet

CPT1B antibody (orb676004)

Description	CPT1B antibody
Species/Host	Rabbit
Reactivity	Human
Conjugation	Unconjugated
Tested Applications	ELISA, IHC, WB
Immunogen	Synthesized peptide derived from the Internal region of Human CPTI-M.
Target	CPT1B
Preservatives	Liquid in PBS containing 50% glycerol, 0.5% rAlbumin and 0.02% sodium azide.
Form/Appearance	Liquid
Storage	Upon receipt, store at -20°C or -80°C. Avoid repeated freeze.
Note	For research use only
Isotype	IgG
Clonality	Polyclonal
Uniprot ID	Q92523
Dilution Range	WB: 1:500-1:2000, IHC-P: 1:100-1:300, ELISA: 1:40000
Expiration Date	12 months from date of receipt.



Western blot analysis of NIH-3T3 cells] ...



Western blot analysis of HepG2 cells usi...