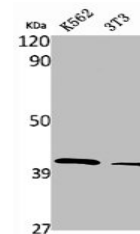


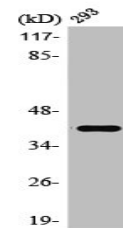
Product Datasheet

PRPF18 antibody (orb675843)

Description	PRPF18 antibody
Species/Host	Rabbit
Reactivity	Human, Mouse, Rat
Conjugation	Unconjugated
Tested Applications	ELISA, WB
Immunogen	Synthesized peptide derived from the Internal region of Human PRPF18.
Target	PRPF18
Preservatives	Liquid in PBS containing 50% glycerol, 0.5% rAlbumin and 0.02% sodium azide.
Form/Appearance	Liquid
Storage	Maintain refrigerated at 2-8°C for up to 2 weeks. For long term storage store at -20°C in small aliquots to prevent freeze-thaw cycles.
Note	For research use only
Isotype	IgG
Clonality	Polyclonal
Uniprot ID	Q99633
Dilution Range	WB: 1:500-1:2000, ELISA: 1:5000
Expiration Date	12 months from date of receipt.



Western blot analysis of K562 NIH-3T3 ce...



Western blot analysis of HuvEc cells usi...