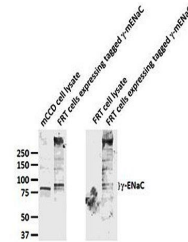


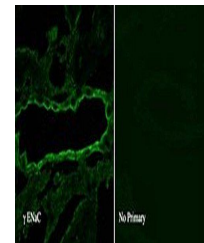
Product Datasheet

ENaC Antibody (orb67569)

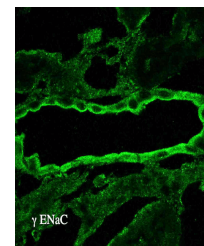
Description	Rabbit Anti-Rat ENaC gamma Polyclonal
Species/Host	Rabbit
Reactivity	Frog, Hamster, Human, Mouse, Rat
Conjugation	Unconjugated
Tested Applications	ICC, IHC, WB
Immunogen	Produced against the C-terminal tail (amino acids 629-650) of rat gamma ENaC (antibody designation L550)
Target	ENaC
Preservatives	PBS, 50% glycerol, 0.09% sodium azide *Storage buffer may change when conjugated
Concentration	1 mg/ml
Storage	-20°C
Note	For research use only
Application notes	1 µg/ml of SPC-405 was sufficient for detection of gamma-ENaC in 20 µg of rat kidney tissue lysate by colorimetric immunoblot analysis using Goat anti-rabbit IgG:HRP as the secondary antibody.
Clonality	Polyclonal
MW	83kDa
Uniprot ID	P37091
NCBI	NP_058742
Entrez	24768
Dilution Range	WB (1:1000), IHC-P (1:100)
Expiration Date	12 months from date of receipt.



Western blot analysis of mouse mCCD and ...



Confocal Immunofluorescence analysis ...



Immunohistochemistry analysis of rat kid...