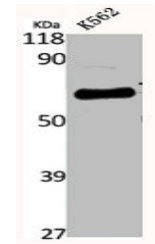


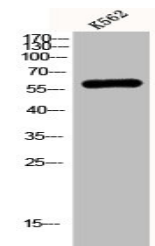
Product Datasheet

KCNC1 antibody (orb675674)

Description	KCNC1 antibody
Species/Host	Rabbit
Reactivity	Human, Mouse, Rat
Conjugation	Unconjugated
Tested Applications	ELISA, IHC, WB
Immunogen	Synthesized peptide derived from the Internal region of Human KV3.1.
Target	KCNC1
Preservatives	Liquid in PBS containing 50% glycerol, 0.5% rAlbumin and 0.02% sodium azide.
Form/Appearance	Liquid
Storage	Maintain refrigerated at 2-8°C for up to 2 weeks. For long term storage store at -20°C in small aliquots to prevent freeze-thaw cycles.
Note	For research use only
Isotype	IgG
Clonality	Polyclonal
Uniprot ID	P48547
Dilution Range	WB: 1:500-1:2000, IHC-P: 1:100-1:300, ELISA: 1:5000
Expiration Date	12 months from date of receipt.



Western blot analysis of K562 cells using KCNC1 antibody.



Western blot analysis of K562 cells using KCNC1 antibody.