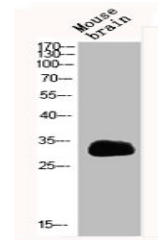


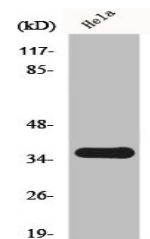
Product Datasheet

SFRP2 antibody (orb675559)

Description	SFRP2 antibody
Species/Host	Rabbit
Reactivity	Human, Mouse, Rat
Conjugation	Unconjugated
Tested Applications	ELISA, WB
Immunogen	Synthesized peptide derived from the Internal region of Human FRP-2.
Target	SFRP2
Preservatives	Liquid in PBS containing 50% glycerol, 0.5% rAlbumin and 0.02% sodium azide.
Form/Appearance	Liquid
Storage	Upon receipt, store at -20°C or -80°C. Avoid repeated freeze.
Note	For research use only
Isotype	IgG
Clonality	Polyclonal
Uniprot ID	Q96HF1
Dilution Range	WB: 1:500-1:2000, ELISA: 1:5000
Expiration Date	12 months from date of receipt.



Western blot analysis of MOUSE-BRAIN cel...



Western blot analysis of HuvEc cells usi...