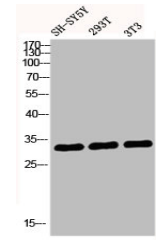


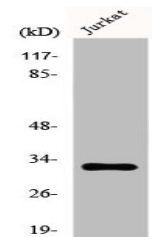
Product Datasheet

KCNIP3 antibody (orb675503)

Description	KCNIP3 antibody
Species/Host	Rabbit
Reactivity	Human, Mouse
Conjugation	Unconjugated
Tested Applications	ELISA, IF, IHC, WB
Immunogen	Synthesized peptide derived from Human DREAM around the non-phosphorylation site of S63.
Target	KCNIP3
Preservatives	Liquid in PBS containing 50% glycerol, 0.5% rAlbumin and 0.02% sodium azide.
Form/Appearance	Liquid
Storage	Maintain refrigerated at 2-8°C for up to 2 weeks. For long term storage store at -20°C in small aliquots to prevent freeze-thaw cycles.
Note	For research use only
Isotype	IgG
Clonality	Polyclonal
Uniprot ID	Q9Y2W7
Dilution Range	WB: 1:500-1:2000, IHC-P: 1:100-1:300, IF: 1:200-1:1000, ELISA: 1:20000
Expiration Date	12 months from date of receipt.



Western blot analysis of SH-SY5Y 293T 3T3...



Western blot analysis of MCF7 cells usin...