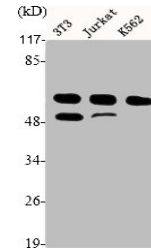


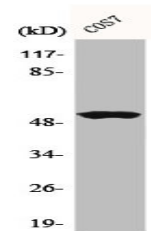
Product Datasheet

CCNA1 antibody (orb675456)

Description	CCNA1 antibody
Species/Host	Rabbit
Reactivity	Human, Monkey, Mouse, Rat
Conjugation	Unconjugated
Tested Applications	ELISA, IF, IHC, WB
Immunogen	Synthesized peptide derived from the Internal region of Human Cyclin A.
Target	CCNA1/CCNA2
Preservatives	Liquid in PBS containing 50% glycerol, 0.5% rAlbumin and 0.02% sodium azide.
Form/Appearance	Liquid
Storage	Maintain refrigerated at 2-8°C for up to 2 weeks. For long term storage store at -20°C in small aliquots to prevent freeze-thaw cycles.
Note	For research use only
Isotype	IgG
Clonality	Polyclonal
Uniprot ID	P78396, P20248
Dilution Range	WB: 1:500-1:2000, IHC-P: 1:100-1:300, IF: 1:200-1:1000, ELISA: 1:10000
Expiration Date	12 months from date of receipt.



Western blot analysis of NIH-3T3 Jurkat ...



Western blot analysis of COS7 cells usin...