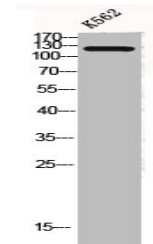


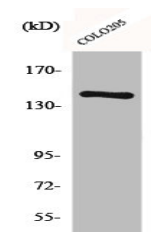
## Product Datasheet

### Collagen II antibody (orb675433)

|                            |   |
|----------------------------|---|
| <b>Description</b>         | Collagen II antibody  |
| <b>Species/Host</b>        | Rabbit  |
| <b>Reactivity</b>          | Human, Mouse, Rat   |
| <b>Conjugation</b>         | Unconjugated  |
| <b>Tested Applications</b> | ELISA, IF, IHC, WB  |
| <b>Immunogen</b>           | Synthesized peptide derived from the N-terminal region of Human COL2A1.   |
| <b>Target</b>              | COL2A1  |
| <b>Preservatives</b>       | Liquid in PBS containing 50% glycerol, 0.5% rAlbumin and 0.02% sodium azide.  |
| <b>Form/Appearance</b>     | Liquid  |
| <b>Storage</b>             | Maintain refrigerated at 2-8°C for up to 2 weeks. For long term storage store at -20°C in small aliquots to prevent freeze-thaw cycles. |
| <b>Note</b>                | For research use only   |
| <b>Isotype</b>             | IgG   |
| <b>Clonality</b>           | Polyclonal  |
| <b>Uniprot ID</b>          | <b>P02458</b>   |
| <b>Dilution Range</b>      | WB: 1:500-1:2000, IHC-P: 1:100-1:300, IF: 1:200-1:1000, ELISA: 1:20000  |
| <b>Expiration Date</b>     | 12 months from date of receipt.   |



Western blot analysis of K562 cells using...



Western blot analysis of COLO205 cells using...