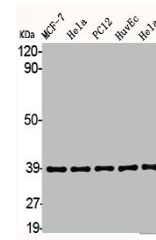


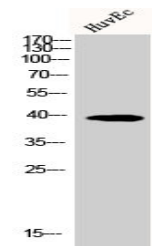
Product Datasheet

ALDOB antibody (orb675314)

Description	ALDOB antibody
Species/Host	Rabbit
Reactivity	Human, Mouse, Rat
Conjugation	Unconjugated
Tested Applications	ELISA, IHC, WB
Immunogen	Synthesized peptide derived from the Internal region of Human Aldolase B.
Target	ALDOB
Preservatives	Liquid in PBS containing 50% glycerol, 0.5% rAlbumin and 0.02% sodium azide.
Form/Appearance	Liquid
Storage	Maintain refrigerated at 2-8°C for up to 2 weeks. For long term storage store at -20°C in small aliquots to prevent freeze-thaw cycles.
Note	For research use only
Isotype	IgG
Clonality	Polyclonal
Uniprot ID	P05062
Dilution Range	WB: 1:500-1:2000, IHC-P: 1:100-1:300, ELISA: 1:20000
Expiration Date	12 months from date of receipt.



Western blot analysis of HuvEc MCF7 HELA...



Western blot analysis of HuvEc cells usi...