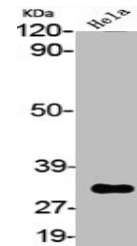


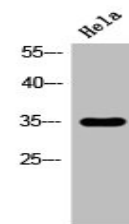
Product Datasheet

HSD11B1 antibody (orb675272)

Description	HSD11B1 antibody
Species/Host	Rabbit
Reactivity	Human, Mouse, Rat
Conjugation	Unconjugated
Tested Applications	ELISA, IHC, WB
Immunogen	Synthesized peptide derived from the N-terminal region of Human 11 β -HSD1.
Target	HSD11B1
Preservatives	Liquid in PBS containing 50% glycerol, 0.5% rAlbumin and 0.02% sodium azide.
Form/Appearance	Liquid
Storage	Maintain refrigerated at 2-8°C for up to 2 weeks. For long term storage store at -20°C in small aliquots to prevent freeze-thaw cycles.
Note	For research use only
Isotype	IgG
Clonality	Polyclonal
Uniprot ID	P28845
Dilution Range	WB: 1:500-1:2000, IHC-P: 1:100-1:300, ELISA: 1:40000
Expiration Date	12 months from date of receipt.



Western blot analysis of HELA cells using HSD11B1 antibody.



Western blot analysis of HeLa cells using HSD11B1 antibody.