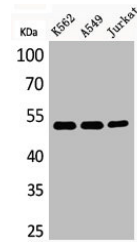


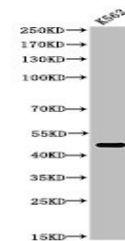
Product Datasheet

Acetyl-TUBA1A (K352) antibody (orb675253)

Description	Acetyl-TUBA1A (K352) antibody
Species/Host	Rabbit
Reactivity	Human, Mouse, Rat
Conjugation	Unconjugated
Tested Applications	ELISA, WB
Immunogen	Synthesized peptide derived from the Human Tubulin α around the acetylation site of K352.
Target	TUBA1A
Preservatives	Liquid in PBS containing 50% glycerol, 0.5% rAlbumin and 0.02% sodium azide.
Form/Appearance	Liquid
Storage	Maintain refrigerated at 2-8°C for up to 2 weeks. For long term storage store at -20°C in small aliquots to prevent freeze-thaw cycles.
Note	For research use only
Isotype	IgG
Clonality	Polyclonal
Uniprot ID	Q71U36
Dilution Range	WB: 1:500-1:2000, ELISA: 1:20000
Expiration Date	12 months from date of receipt.



Western blot analysis of K562, A549, Jur...



Western blot analysis of K562 cells usin...