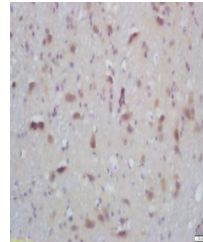


Product Datasheet

PKC alpha/beta II (phospho-Thr638/641) antibody (orb6739)

Description	PKC alpha/beta II (phospho-Thr638/641) antibody
Species/Host	Rabbit
Reactivity	Human, Mouse, Rat
Conjugation	Unconjugated
Tested Applications	IHC-P, WB
Immunogen	KLH conjugated synthesised phosphopeptide derived from human PKC alpha around the phosphorylation site of Thr638 (VL(p-T)PP)
Target	Phospho-PKC alpha (Thr638)
Preservatives	0.01M TBS(pH7.4) with 1% rAlbumin, 0.03% Proclin300 and 50% Glycerol.
Form/Appearance	Liquid
Concentration	1mg/ml
Storage	Shipped at 4°C. Store at -20 °C for one year. Avoid repeated freeze/thaw cycles.
Note	For research use only
Isotype	IgG
Clonality	Polyclonal
MW	77 kDa
Uniprot ID	P17252
Dilution Range	WB=1:500-2000, IHC-P=1:100-500
Expiration Date	12 months from date of receipt.



Immunohistochemical staining of Mouse br...