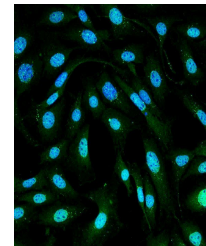


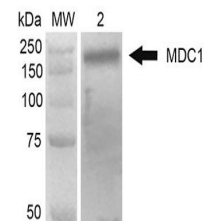
Product Datasheet

MDC1 Antibody (orb67385)

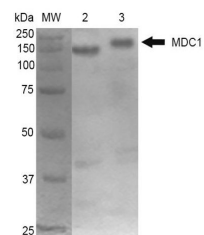
Description	Mouse Anti-Mouse MDC1 Monoclonal IgG1
Species/Host	Mouse
Reactivity	Bovine, Human, Mouse, Primate
Conjugation	Unconjugated
Tested Applications	ICC, WB
Immunogen	GST-tagged recombinant protein corresponding to mouse MDC1 at and around the N-terminus
Target	MDC1
Preservatives	PBS pH 7.4, 50% glycerol, 0.09% sodium azide *Storage buffer may change when conjugated
Concentration	1 mg/ml
Storage	-20°C
Note	For research use only
Application notes	0.5 µg/ml of SMC-197 was sufficient for detection of MDC1 in 10 µg of HeLa cell lysate by ECL immunoblot analysis.
Isotype	IgG1
Clonality	Monoclonal
MW	184kDa
Uniprot ID	Q5PSV9
NCBI	NP_001010833.2
Entrez	240087
Dilution Range	WB (1:2000), ICC/IF (1:100)
Expiration Date	12 months from date of receipt.



Immunofluorescence analysis of fibroblas...



Western Blot analysis of human 293trap c...



Western Blot analysis of mouse cortex an...