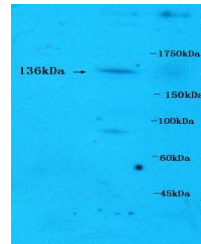


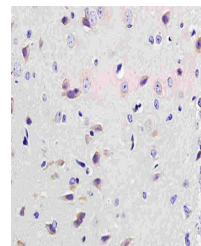
Product Datasheet

PLC beta3 (phospho-Ser1105) antibody (orb6737)

Description	PLC beta3 (phospho-Ser1105) antibody
Species/Host	Rabbit
Reactivity	Human
Conjugation	Unconjugated
Tested Applications	FC
Immunogen	KLH conjugated synthesised phosphopeptide derived from human PLC beta3 around the phosphorylation site of Ser1105 (N(p-S)ISE)
Target	Phospho-PLC beta3 (Ser1105)
Preservatives	0.01M TBS(pH7.4) with 1% rAlbumin, 0.03% Proclin300 and 50% Glycerol.
Form/Appearance	Liquid
Concentration	1mg/ml
Storage	Shipped at 4°C. Store at -20 °C for one year. Avoid repeated freeze/thaw cycles.
Note	For research use only
Isotype	IgG
Clonality	Polyclonal
MW	136 kDa
Uniprot ID	Q01970
Dilution Range	Flow-Cyt=1µg /Test, WB=1:500-2000, IHC-P=1:100-500, IHC-F=1:100-500, IF=1:100-500, ELISA=1:5000-10000
Expiration Date	12 months from date of receipt.



Western blot of mouse brain tissue using...



Immunohistochemical analysis of paraffin...