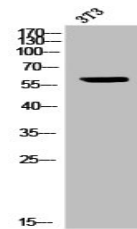


Product Datasheet

ICAM3 antibody (orb672838)

Description	ICAM3 antibody
Species/Host	Rabbit
Reactivity	Human
Conjugation	Unconjugated
Tested Applications	ELISA, IF, WB
Immunogen	Synthesized peptide derived from Human CD50 around the non-phosphorylation site of S518.
Target	ICAM3
Preservatives	Liquid in PBS containing 50% glycerol, 0.5% rAlbumin and 0.02% sodium azide.
Form/Appearance	Liquid
Storage	Upon receipt, store at -20°C or -80°C. Avoid repeated freeze.
Note	For research use only
Isotype	IgG
Clonality	Polyclonal
Uniprot ID	P32942
Dilution Range	WB: 1:500-1:2000, IF: 1:200-1:1000, ELISA: 1:5000
Expiration Date	12 months from date of receipt.



Western blot analysis of NIH-3T3 cells u...