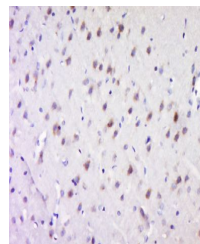


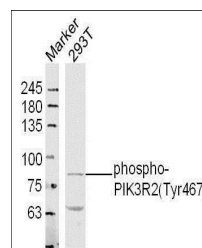
Product Datasheet

PIK3R2 (phospho-Tyr467) antibody (orb6727)

Description	PIK3R2 (phospho-Tyr467) antibody
Species/Host	Rabbit
Reactivity	Human, Rat
Conjugation	Unconjugated
Tested Applications	IHC-P, WB
Immunogen	KLH conjugated Synthesised phosphopeptide derived from human PIK3R2 around the phosphorylation site of Tyr467 (EE(P-Y)TR)
Target	phospho-PIK3R2 (Tyr467)
Preservatives	0.01M TBS(pH7.4) with 1% rAlbumin, 0.03% Proclin300 and 50% Glycerol.
Form/Appearance	Liquid
Concentration	1mg/ml
Storage	Shipped at 4°C. Store at -20 °C for one year. Avoid repeated freeze/thaw cycles.
Note	For research use only
Isotype	IgG
Clonality	Polyclonal
MW	82 kDa
Uniprot ID	000459
Dilution Range	WB=1:500-2000, IHC-P=1:100-500
Expiration Date	12 months from date of receipt.



Immunohistochemical staining of rat brain...



Western blot analysis of human 293T cell...