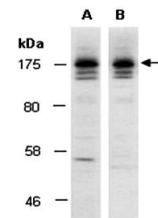


Product Datasheet

SOS2 antibody (orb67259)

Description	Rabbit polyclonal to SOS2. Son of Sevenless (SOS) was discovered in <i>Drosophila melanogaster</i> . SOS has ...
Species/Host	Rabbit
Reactivity	Human
Conjugation	Unconjugated
Tested Applications	WB
Immunogen	C-terminal region of human SOS2
Preservatives	0.01% NaN ₃
Storage	-20°C
Note	For research use only
Clonality	Polyclonal
Purity	Affinity purification
MW	153
Uniprot ID	Q07890
Dilution Range	WB:1:500-1:2000
Expiration Date	12 months from date of receipt.



Western blot analysis of total cell extr...