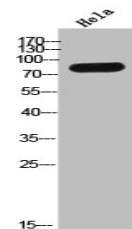


Product Datasheet

TMC8 antibody (orb672589)

| | |
|----------------------------|---|
| Description | TMC8 antibody |
| Species/Host | Rabbit |
| Reactivity | Human, Mouse, Rat |
| Conjugation | Unconjugated |
| Tested Applications | ELISA, IHC, WB |
| Immunogen | Synthesized peptide derived from the C-terminal region of Human TMC8. |
| Target | TMC8 |
| Preservatives | Liquid in PBS containing 50% glycerol, 0.5% rAlbumin and 0.02% sodium azide. |
| Form/Appearance | Liquid |
| Storage | Maintain refrigerated at 2-8°C for up to 2 weeks. For long term storage store at -20°C in small aliquots to prevent freeze-thaw cycles. |
| Note | For research use only |
| Isotype | IgG |
| Clonality | Polyclonal |
| Uniprot ID | Q8IU68 |
| Dilution Range | WB: 1:500-1:2000, IHC-P: 1:100-1:300, ELISA: 1:5000 |
| Expiration Date | 12 months from date of receipt. |



Western blot analysis of HeLa cells usin...