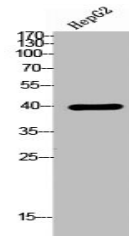


Product Datasheet

RSAD2 antibody (orb672320)

Description	RSAD2 antibody
Species/Host	Rabbit
Reactivity	Human
Conjugation	Unconjugated
Tested Applications	ELISA, WB
Immunogen	Synthesized peptide derived from the N-terminal region of Human RSAD2.
Target	RSAD2
Preservatives	Liquid in PBS containing 50% glycerol, 0.5% rAlbumin and 0.02% sodium azide.
Form/Appearance	Liquid
Storage	Upon receipt, store at -20°C or -80°C. Avoid repeated freeze.
Note	For research use only
Isotype	IgG
Clonality	Polyclonal
Uniprot ID	Q8WXG1
Dilution Range	WB: 1:500-1:2000, ELISA: 1:20000
Expiration Date	12 months from date of receipt.



Western blot analysis of HepG2 cells using...