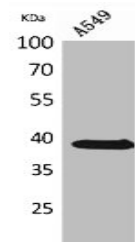


Product Datasheet

SLC10A1 antibody (orb672179)

Description	SLC10A1 antibody
Species/Host	Rabbit
Reactivity	Human
Conjugation	Unconjugated
Tested Applications	ELISA, WB
Immunogen	Synthesized peptide derived from the C-terminal region of Human NTCP.
Target	SLC10A1
Preservatives	Liquid in PBS containing 50% glycerol, 0.5% rAlbumin and 0.02% sodium azide.
Form/Appearance	Liquid
Storage	Maintain refrigerated at 2-8°C for up to 2 weeks. For long term storage store at -20°C in small aliquots to prevent freeze-thaw cycles.
Note	For research use only
Isotype	IgG
Clonality	Polyclonal
Uniprot ID	Q14973
Dilution Range	WB: 1:500-1:2000, ELISA: 1:20000
Expiration Date	12 months from date of receipt.



Western blot analysis of A549 cells using...