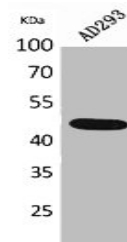


Product Datasheet

GORAB antibody (orb672176)

Description	GORAB antibody
Species/Host	Rabbit
Reactivity	Human, Mouse, Rat
Conjugation	Unconjugated
Tested Applications	ELISA, WB
Immunogen	Synthesized peptide derived from the N-terminal region of Human SCYL1BP1.
Target	GORAB
Preservatives	Liquid in PBS containing 50% glycerol, 0.5% rAlbumin and 0.02% sodium azide.
Form/Appearance	Liquid
Storage	Maintain refrigerated at 2-8°C for up to 2 weeks. For long term storage store at -20°C in small aliquots to prevent freeze-thaw cycles.
Note	For research use only
Isotype	IgG
Clonality	Polyclonal
Uniprot ID	Q5T7V8
Dilution Range	WB: 1:500-1:2000, ELISA: 1:20000
Expiration Date	12 months from date of receipt.



Western blot analysis of AD293 cells
usi...