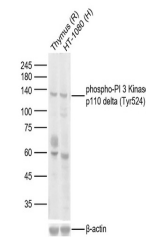


Product Datasheet

PI3KD (phospho-Tyr524) antibody (orb6720)

Description	PI3KD (phospho-Tyr524) antibody
Species/Host	Rabbit
Reactivity	Human, Mouse, Rat
Conjugation	Unconjugated
Tested Applications	FC, WB
Immunogen	KLH conjugated Synthesised phosphopeptide derived from human PIK3CD around the phosphorylation site of Tyr524 (EL(p-Y)EH)
Target	phospho-PI 3 Kinase p110 delta (Tyr524)
Preservatives	0.01M TBS(pH7.4) with 1% rAlbumin, 0.03% Proclin300 and 50% Glycerol.
Form/Appearance	Liquid
Concentration	1mg/ml
Storage	Maintain refrigerated at 2-8°C for up to 2 weeks. For long term storage store at -20°C in small aliquots to prevent freeze-thaw cycles.
Note	For research use only
Isotype	IgG
Clonality	Polyclonal
MW	115 kDa
Uniprot ID	000329
Dilution Range	WB=1:500-2000, Flow-Cyt=2ug/Test, IHC-P=1:100-500, IHC-F=1:100-500, IF=1:100-500, ELISA=1:5000-10000
Expiration Date	12 months from date of receipt.



Western blot: Lane 1:Rat Thymus; Lane 2:Hu...